
Staffordshire University Innovation Enterprise Zone

Professor Tony Dodd

Deputy Dean, School of Digital, Technologies and Arts



THE
CONNECTED
UNIVERSITY

SOME HISTORY

Stoke-on-Trent

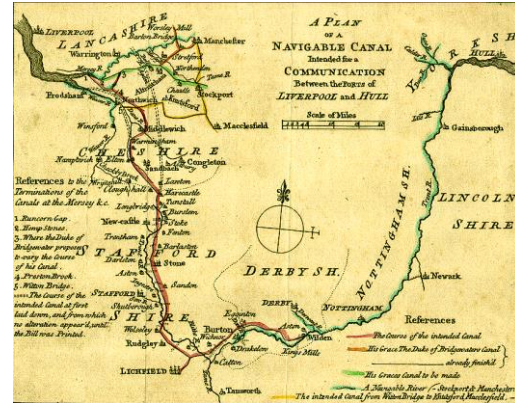


Stoke-on-Trent



History of The Potteries

Trent and Mersey Canal, 1777



Middleport Pottery



Wedgwood Etruria Works, 1926



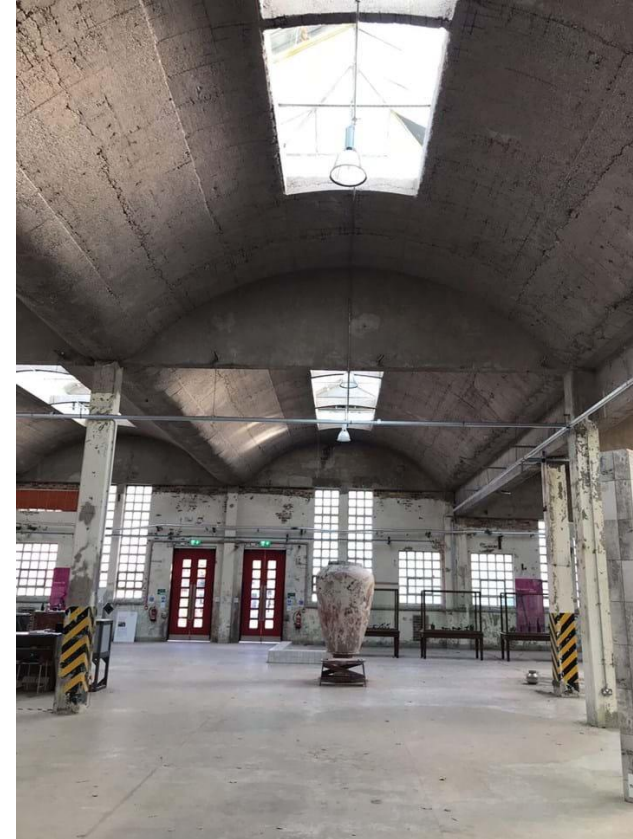
Spode Works, 1927

Restoration of The Potteries

Middleport Pottery



Spode Works



Etruria Works

Ceramics

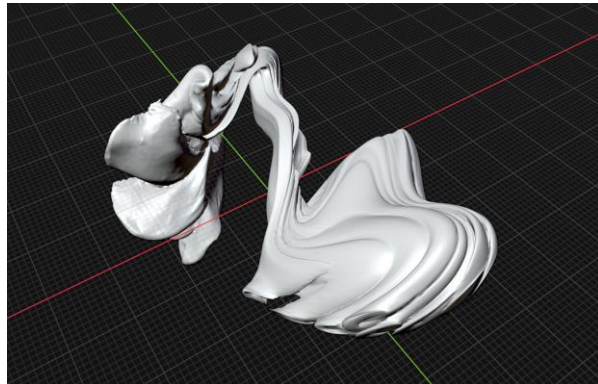
Clarice Cliff 'Ravel' pattern, 1930



Wedgwood Jasperware vase, 1790



Contemporary understanding of the past: Neil Brownsword



Alchemy and Metamorphosis
18 Sep 2021–30 Jan 2022
The Potteries Museum & Art Gallery

Present day



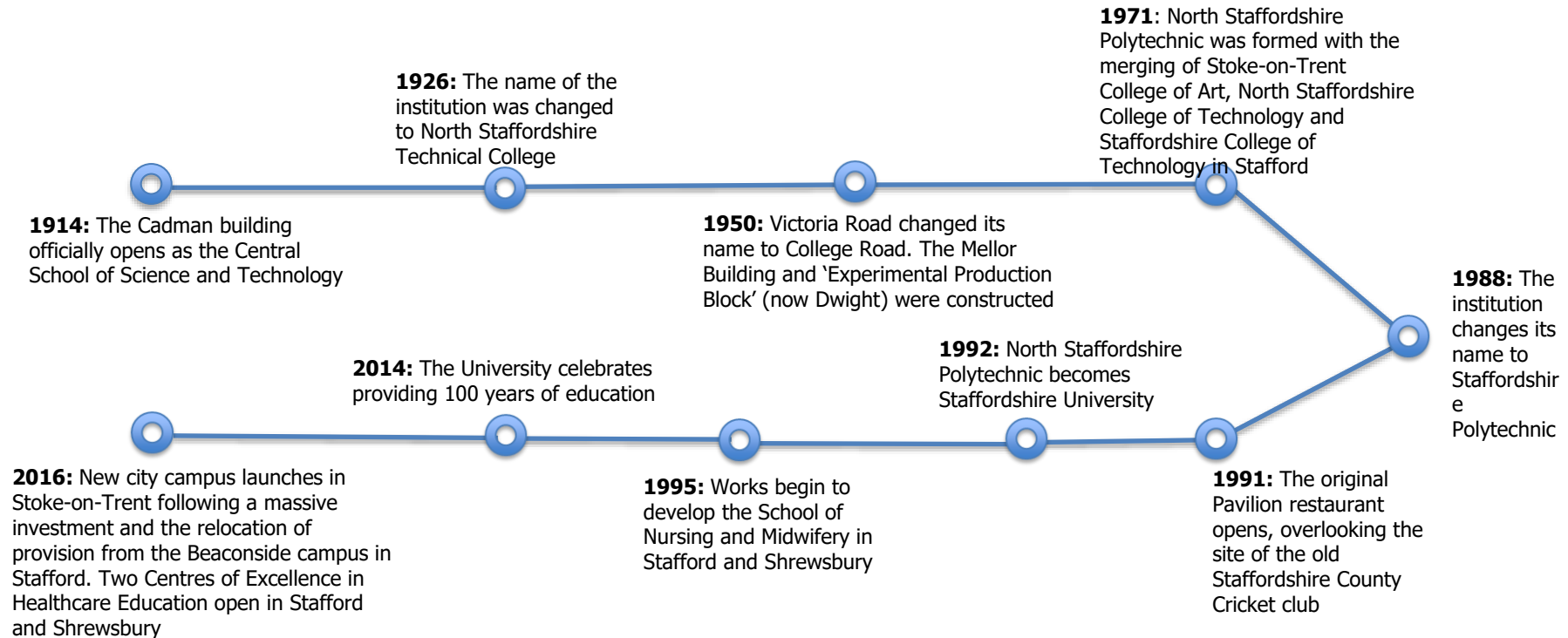
Exemplar post-industrial city

Below average R&D investment

37th/38 on productivity

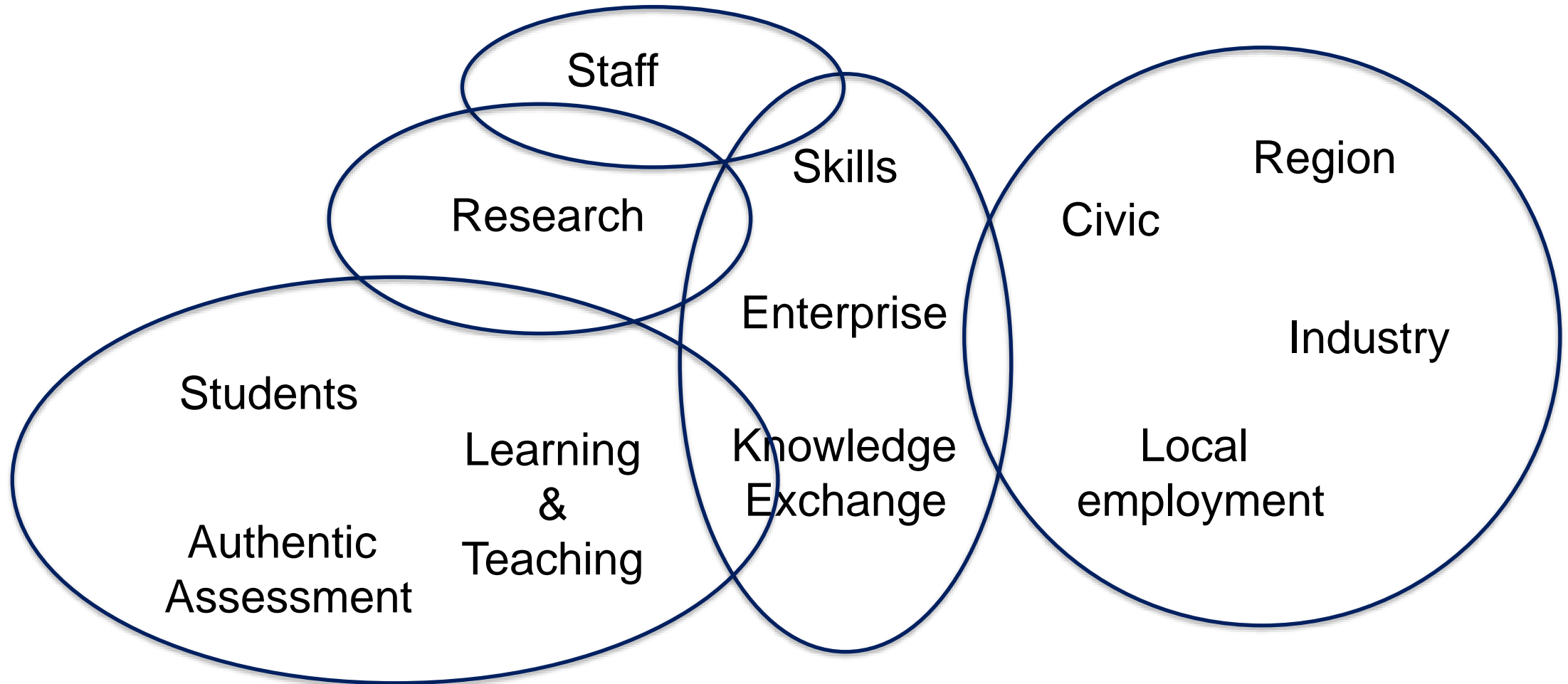
Below average higher skills

Staffordshire University



UNIVERSITY STRATEGY

Enterprise and Knowledge Exchange in Context



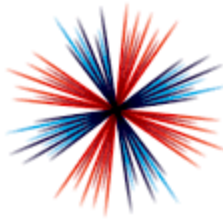
INNOVATION ENTERPRISE ZONE




INNOVATION
ENTERPRISE ZONE



- **29th out of 38 LEPs for overall business R&D expenditure, and 23rd out of 38 for business R&D expenditure per full time employee (FTE) (2013).**
- **Below average productivity** - £19,114 produced per person, compared to £22,301 for WM and £27,660 in England. In 2017, GVA per hour worked was £25.90 in SSLEP area. This puts the area in position **37 out of 38 LEPs.**
- **Below average higher skills (Level 4+) levels**
- **38 new business start-ups per 10,000 people in SSLEP area, a lower proportion than the regional and national averages**
- **Business density** of 410 businesses per 10,000 population, lower than the regional and national averages.
- Growth in job numbers in manufacturing in SSLEP area has been over half of total national net jobs growth between 2009-2017
- Post Covid-19 recovery
- High value & higher skills economy



INDUSTRIAL STRATEGY

STAFFORDSHIRE UNIVERSITY
INNOVATION ENTERPRISE ZONE

Our five foundations align to our vision for a transformed economy



AI & Data Economy

We will put the UK at the forefront of the artificial intelligence and data revolution



Clean Growth

We will maximise the advantages for UK industry from the global shift to clean growth



Future of Mobility

We will become a world leader in the way people, goods and services move



Ageing Society

We will harness the power of innovation to help meet the needs of an ageing society

- New jobs
- Productivity
- Competitiveness
- Higher margins
- Investment in R&D, IP assets generation
- Product to new market (e.g. intelligent mobility)
- New innovative products
- Access new markets

99.6%
of SSLEP companies are
SMEs

Local Industrial Strategy

March 2020

The UK's most highly connected, inclusive economy. A centre for new businesses and entrepreneurs, using digital, transport and energy networks to drive growth and ambition through innovation, scale up businesses, inward investment and raising enterprise.

Ideas

Increased business capacity to absorb and adopt. Growing existing centres of excellence – as leaders in logistics, energy use and manufacturing



People

Raising wages, skills and ambition - a place where providers and industry collaborate & people and firms get the retraining and technical / digital skills needed



Infrastructure

Maximising the impact of local energy networks, digital connectivity, and future logistics innovation



Business environment

A business start up and growth hot spot – with increasing productivity and enterprise levels, and sustainable energy and resource use



Place

Repurposing / revitalising our town centres and city – commercial offer and excellent quality of life



Advanced Man
Auto, Aero,
Rail

Advanced materials

Med Tech

Business services

Energy

Agri /
Food

Business &
leisure
tourism

Logistics
Future
mobility

Creative,
Games,
Designer-Makers

Addressing national Grand Challenges using local expertise: Clean Growth and Future Mobility
– a centre of energy and logistics innovation based on AI/Digital skills and technology

Ideas: we have managed to influence in the areas of **digital, materials and mobility** to fit our university ambitions and projects that are approved including the NEW addition of **Staffordshire Connected and Intelligent Mobility Innovation Accelerator (SCIMIA)**.

As a university, we will take a lead and position us in **3MD** i.e. **Manufacturing, Materials and Mobility and Digital and 5G** through SAMPID, SAMIAC, SCIMIA as well as existing SDIP to lead the 'Ideas' strand in 3MD.

We will deliver against the '**People**' strand through our apprenticeships provision and **Higher Skills project encompassing CPD- micro credentials learning.**

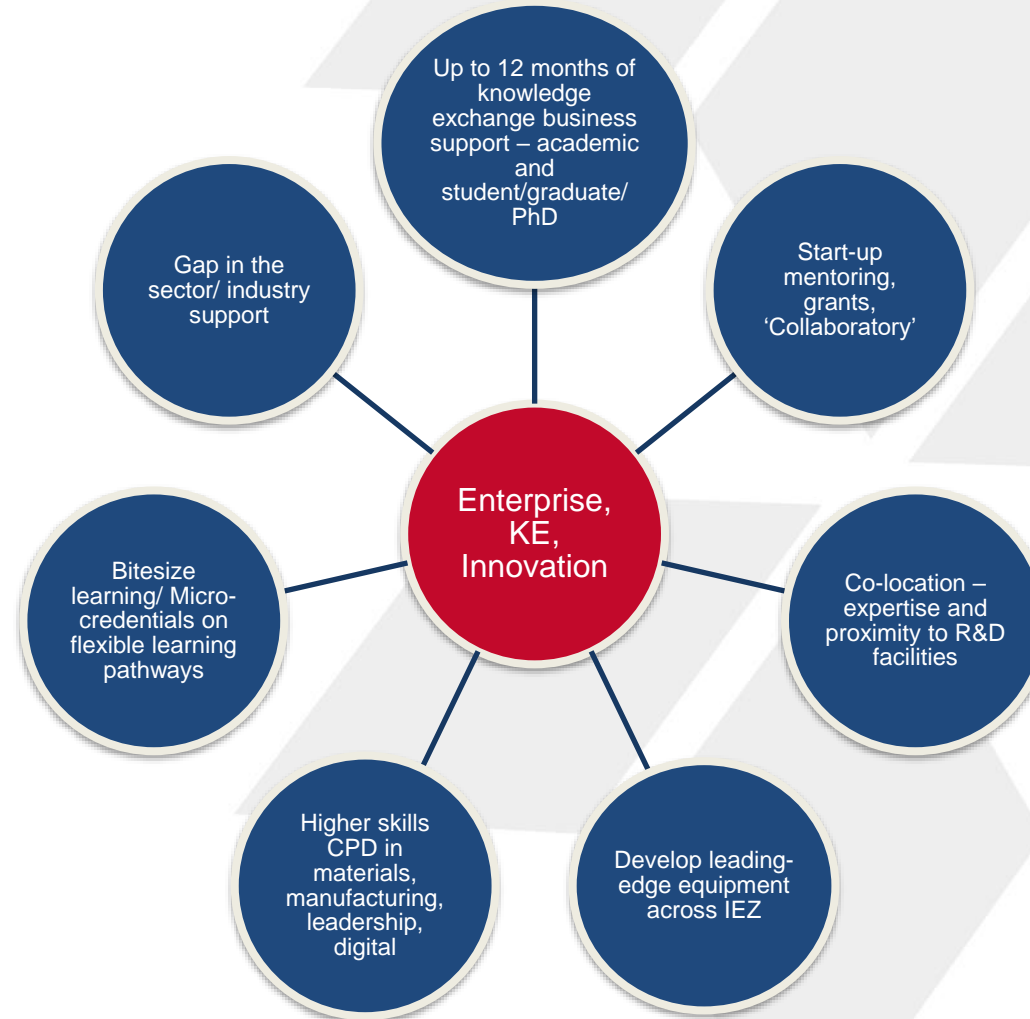
The Connected Communities strand of our **Connected University Strategy** emphasizes the university's mission and vision in **knowledge exchange** to:

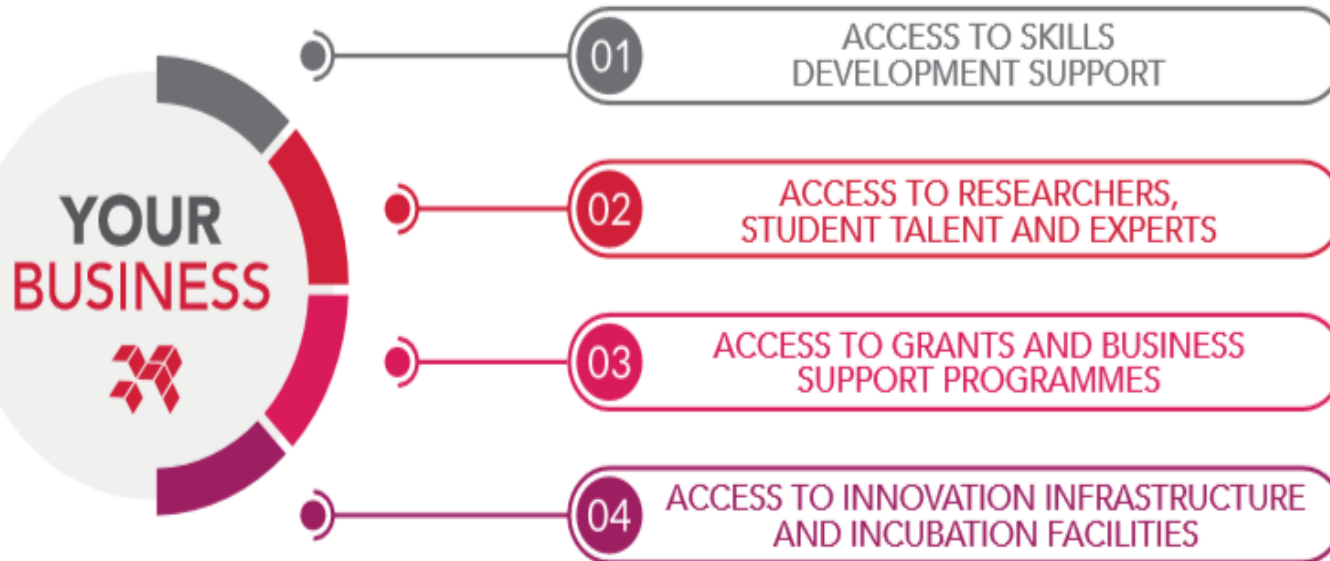
- be the **intellectual hub** of our city and region
- **support employers to innovate and grow through our research and knowledge transfer**
- play a leading role to deliver the city's and region's ambitions and **increase higher level skills** in the population and the workplace
- drive growth of the **digital economy** in the region.



<ul style="list-style-type: none">• Innovation & KE• Delivering HEBCI• Drive employability• Income generation• Positioning	THEMATIC AREAS & STRATEGIC FIT - Employer-led Research, Development & Innovation (RD&I) - DEVELOPMENT FOCUS			
	Advanced Manufacturing	Advanced Materials	Intelligent Mobility	Digital
	✓	✓	✓	✓
	✓	✓	✓	✓
	✓	✓	✓	✓
	✓	✓	✓	✓
Our Research and Expertise Resource	<ul style="list-style-type: none">• Renewable energy systems• Engineering• Electronics• Materials• Product design and creativity• Robotics• Data...	<ul style="list-style-type: none">• Applied and advanced materials with applications in a number of sectors e.g. energy, health• Small-scale manufacturing	<ul style="list-style-type: none">• Engineering, Electronics; Robotics• Data; Artificial Intelligence; IoT• Economy; Markets• SW development• Cloud computing• Smart cities and 5G• Gaming, augmented and mixed reality, and artificial intelligence• Cognitive Psychology and Behaviour Change• Environmental studies and Geography	<ul style="list-style-type: none">• SW development• Cloud computing• Data mining• Smart cities and economic development• Gaming, augmented and mixed reality, and artificial intelligence• IoT• 5G

How do we approach the KE development





Advanced Materials Incubator and Accelerator Centre

- SAMIAC

Advanced Manufacturing Prototyping and Innovation Demonstrator

- SAMPID

Digital Innovation Partnerships

- SDIPs

Intelligent Mobility Innovation Accelerator

- SCIMIA

Be Inspired

- BiSU

Higher Skills Pathways

- SHESP / SEGWAY - CPD

Innovation Enterprise Zone

Advanced Manufacturing,
Prototyping and Innovation
Demonstrator (SAMPID)

Advanced Materials
Incubation and Accelerator
Centre (SAMIAC)

Digital Innovation
Partnerships

Higher Skills Educational
Pathways – CPD

BeInspired

Intelligent Mobility
Innovation Accelerator
(SCIMIA)

Creative Lab

E & Entrepreneurships
Skills Gateway

STAFFORDSHIRE ADVANCED MATERIALS INCUBATION AND ACCELERATOR CENTRE (SAMIAC)



INNOVATION
ENTERPRISE ZONE



INCUBATION AND START UP HATCHERY

- 11 brand new incubator offices in Mellor building
- The Hatchery*
- Fully equipped meeting room with integrated video conferencing equipment
- Second breakout meeting room
- Virtual reception area
- Innovation laboratory/ equipment
- Access to researchers, experts, students
- Access to CPD Programme
- Collision spaces



**The Hatchery facility houses five pods for office space and offers a stepping-stone for companies that are in the early stages of development.*

STAFFORDSHIRE ADVANCED MANUFACTURING PROTOTYPING AND INNOVATION DEMONSTRATOR (SAMPID)

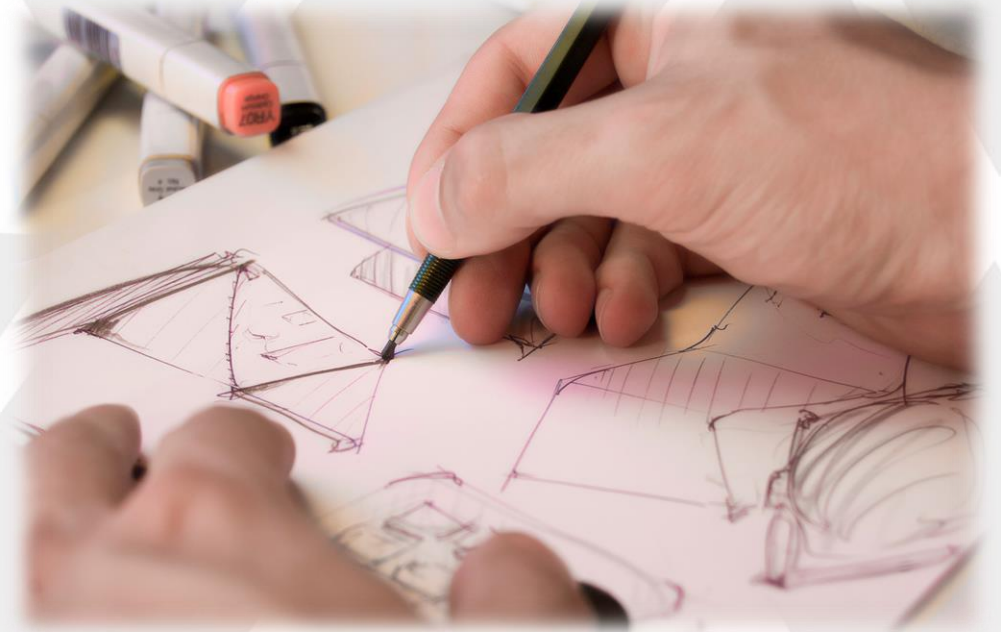


- Supporting 50 eligible Stoke and Staffordshire SMEs, the project's primary focus is to support manufacturing businesses and their supply chains with designing and developing new products and/or new product component(s) and processes
- Key sectors : Aero-auto, Energy, Agri-tech, Medical Technology, Applied materials, Transport and Food and drink
- The SAMPID programme's tailored prototype support provides an excellent route for businesses that currently do not have the resources or knowledge to embed advanced manufacturing solutions to transform their business
- The project is delivered through a 12-week business support programme comprising of a part time student and academic expertise
- All to be undertaken at the University Enterprise Zone facility with access to university's facilities and state-of-the-art advanced manufacturing equipment including 3D Metal Printers and Robotic Arms

TYPES OF SUPPORTED PROJECTS

- Industrial Design
- 3d Printing in metal and plastic
- Analysis of different materials, shapes, sizes
- Developing bespoke components
- Testing, developing and valuating an assembly process

The research element is crucial for each product and each collaboration will be bespoke and led by the business



ADVANCED MANUFACTURING EQUIPMENT



STAFFORDSHIRE DIGITAL INNOVATION PARTNERSHIPS (SDIPS)



STAFFORDSHIRE DIGITAL INNOVATION PARTNERSHIPS (SDIPS)

- SDIPs is a collaborative project between Staffordshire University and Staffordshire County Council to drive digital innovation in the region
- The project offers local SME businesses the support to research and develop new digitally innovative products, services or processes which have the potential to transform their business
- 36 innovation partnerships with one full time student or graduate placement for 6 months plus ½ day per-week academic expertise and guidance



SDIP PROGRAMME STRANDS

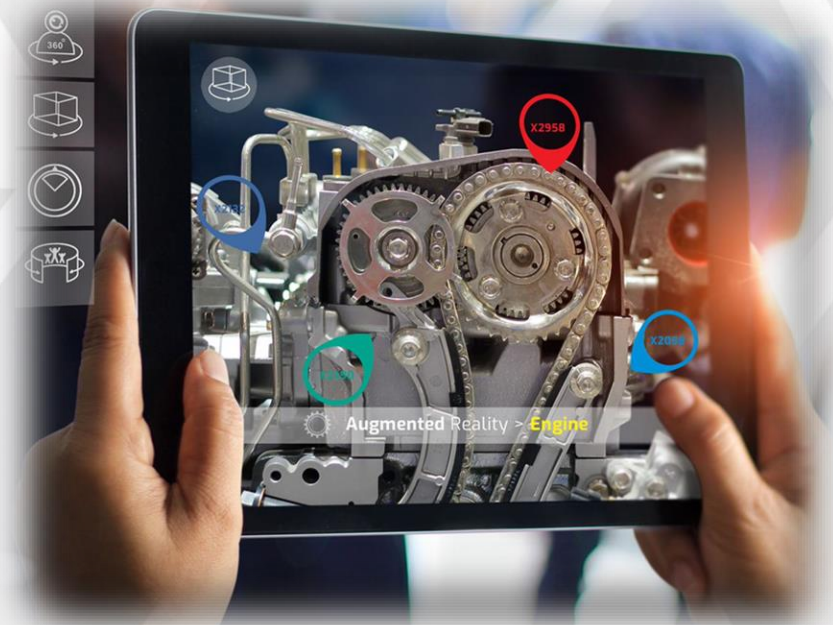
Businesses are invited to submit projects which will lead to the development of a new digital product, service or process under any of the following strands:

1) Digital Innovation

2) Business Intelligence

3) Social Challenge

- 1) Raising the aspirations of Staffordshire children and young people
- 2) Reducing isolation for the elderly
- 3) Improving the digital capabilities of Staffordshire citizens
- 4) Enabling and growing social action and community support
- 5) Children's emotional and mental wellbeing

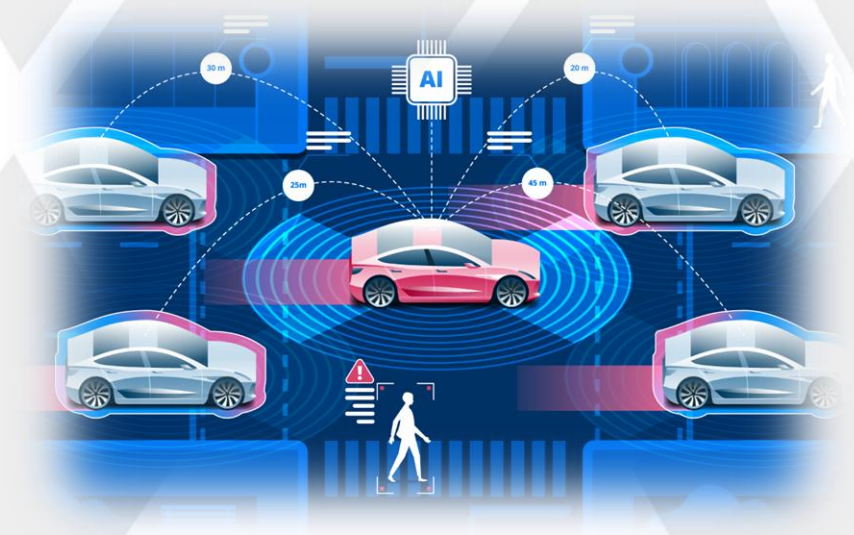


STAFFORDSHIRE CONNECTED & INTELLIGENT MOBILITY INNOVATION ACCELERATOR (SCIMIA)



STAFFORDSHIRE CONNECTED & INTELLIGENT MOBILITY INNOVATION ACCELERATOR (SCIMIA)

- Support 45 eligible Stoke and Staffordshire SMEs
- Focus on intelligent mobility: people and goods, logistics, smart infrastructure, intelligent transport networks, vehicle design and manufacture, driverless technologies
- Support from academic, student, innovation fellow and dedicated technician
- Up to 12 months of support to develop new product or service



CREATIVE LAB



INNOVATION
ENTERPRISE ZONE



CREATIVE LAB

- Space to stimulate innovation
- Creativity
- Design
- Entrepreneurship
- Training and skills
- Equipment



ENTERPRISE ACADEMY



INNOVATION
ENTERPRISE ZONE



TRAINING

- BeInspired
- SEGWAY
- SHESP
- Microcredentials
- Bitesized training



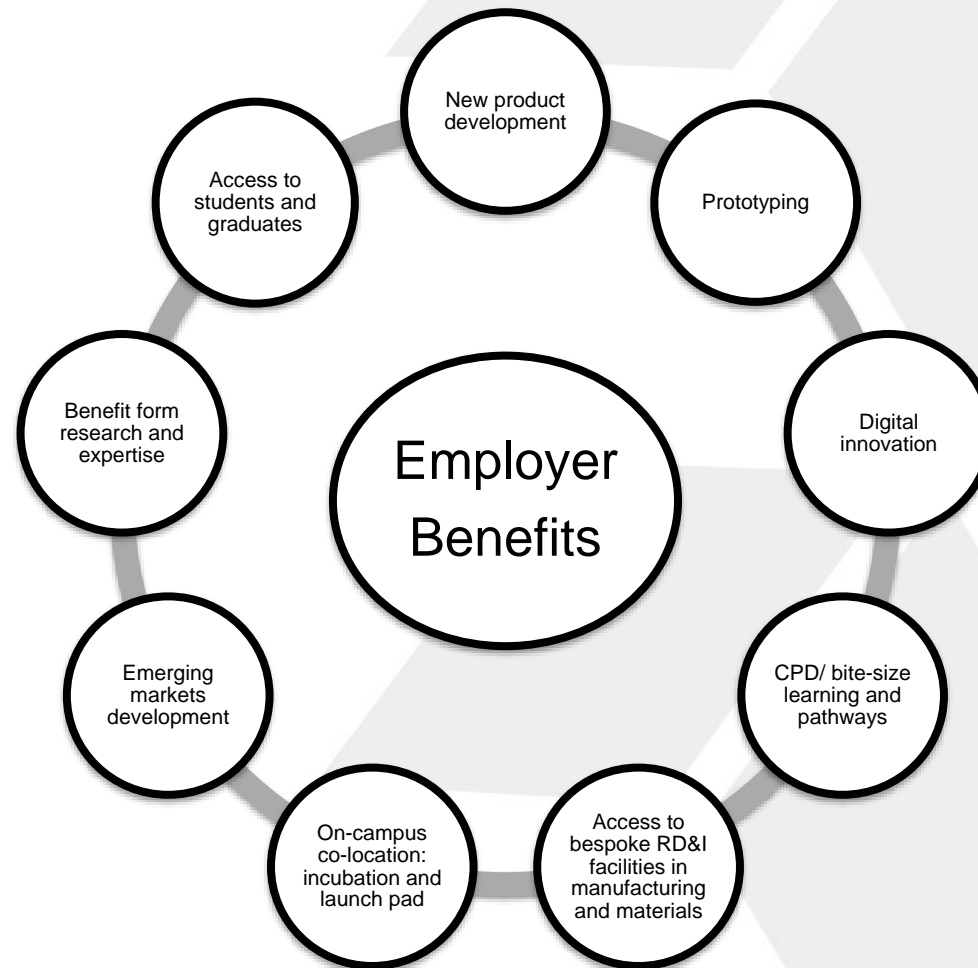
BENEFITS



INNOVATION
ENTERPRISE ZONE



Benefits

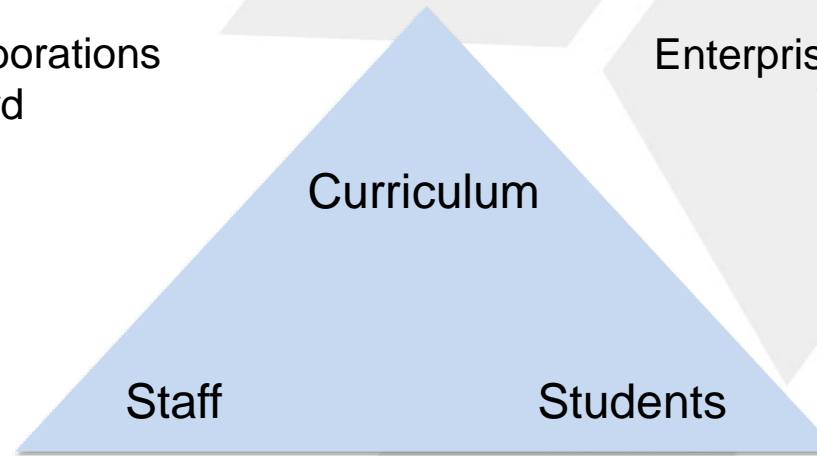


School of Digital, Technology and Arts

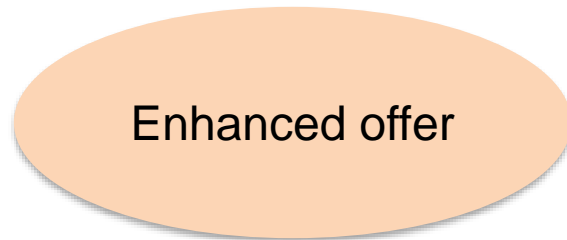
Harvesting benefits of IEZ – Students Perspective

STAFFORDSHIRE UNIVERSITY
INNOVATION ENTERPRISE ZONE

Final year project case studies/collaborations
Members for industrial advisory board
Case studies/examples for lectures
Student recruitment and marketing
Curriculum development
Apprenticeships
Guest lectures
Accreditation
CPD



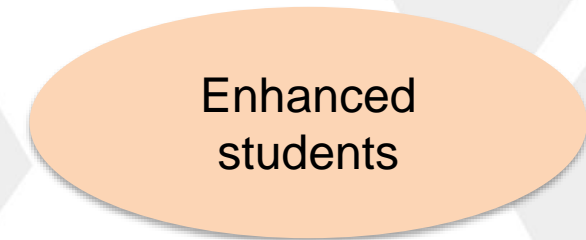
Enterprise support for business development ideas
Work on equipment in real world problems
Real world skills development
Relevant paid part-time work
Work experience for CV
Improved employability
Enterprise thinking
Innovation thinking



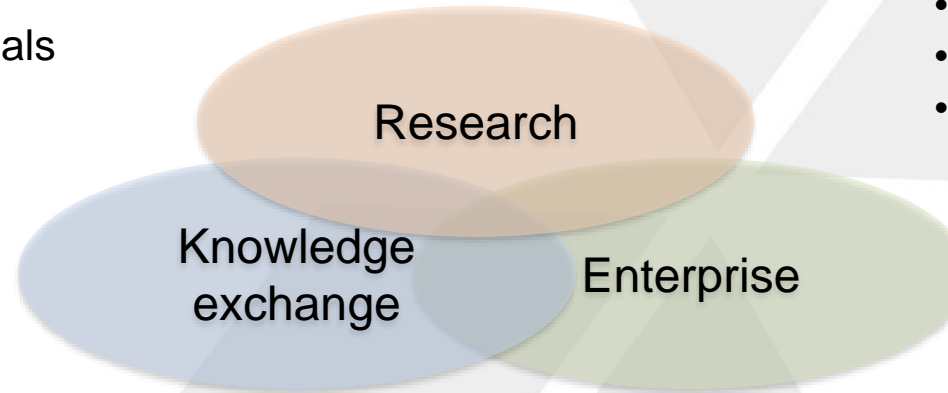
Enhanced student experience



Enhanced employability



- Case studies – papers, PhD students
- New ideas for research – problem driven
- New collaborative opportunities
- Letters of support for grant proposals
- Research impact
- Equipment



- Innovation grants
- Consultancy
- Impact case studies
- IP and spin-outs
- Civic engagement

- REF – impact case studies and environment
- KEF – metrics and narrative

CASE STUDIES

SAMPID

- 12 week projects
- 15 hours per week
- Student innovation consultant
- Academic supervision
- Company interaction
- Typical broken into 3 phases – preliminary research, concept design and prototyping, testing and evaluation

DIVERSITY OF PROJECTS

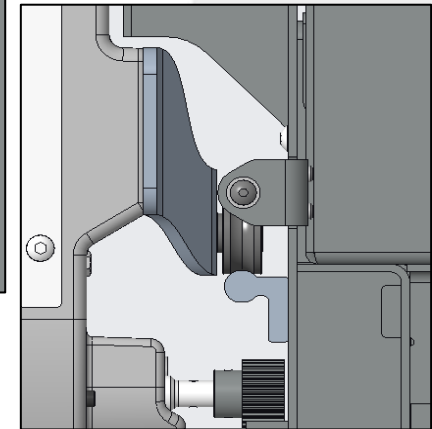
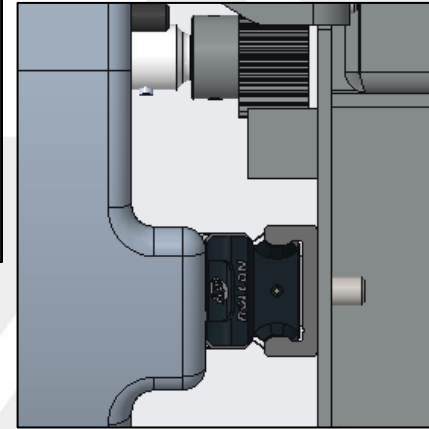
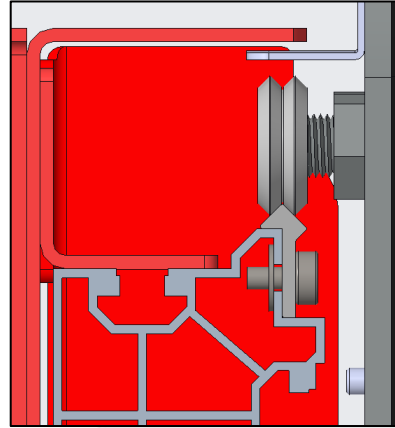
- Redesign of laser cutting machines
- Disinfecting buses using chemical mist
- Novel ozone machine for cleaning laundry
- Novel endoscopy device
- Glasses cover for sports people
- Automatic testing for legionella in water pipes
- UV disinfection of medical equipment
- Novel clip for fixing roof tiles
- Robotic weighing of powders

APPROACHES

- Product design
- Industrial design
- Computer aided design
- Finite element modelling
- Computational fluid dynamics
- Electronics design
- 3D rapid prototyping – plastic and metal
- Robotics

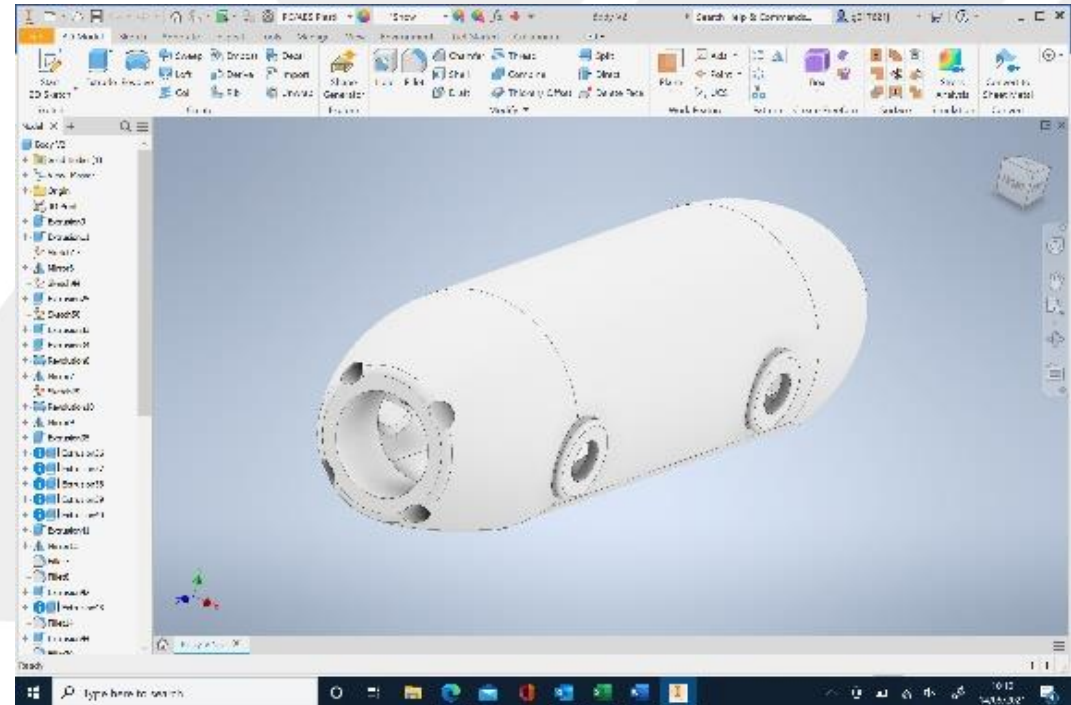
ADAPTING A LASER CUTTING MACHINE

- Improve assembly
- Maintain performance
- Initial market research
- CAD designs of concepts
- Finite element analysis



NOVEL ENDOSCOPY DEVICE

- Completely new approach
- CAD design
- Electronics design
- Materials selection
- 3D printing prototypes
- Design iterations



HOW DO WE RECRUIT STUDENTS?

- Franchise agreement
- Generates large income to university
- Very efficient
- Burden of recruitment away from academics
- Focus on recruiting students, graduates and local professionals

UNITEMPS

www.unitemps.com

STAFF INVOLVEMENT

- Associate Dean Employer Partnerships and Enterprise
- Associate Deans for Research and Enterprise
- Director of Business, Development and Enterprise
- Programme Managers
- Administration assistants
- Business development managers
- Academics

CONCLUDING REMARKS

KEY MESSAGES

- Funding for regional development
- Focus on small and medium enterprises
- But comes with conditions – requirements for
 - People trained
 - Businesses supported
 - New start-ups supported
 - New products developed
 - New employment

KEY MESSAGES

- Investment in people and facilities
- Supports students, staff, industry and region
- New relationships with industry
- New ongoing collaborations
- Students have performed to a very high level
- Real innovations
- Ecosystem

APPENDIX – USEFUL WEBSITES

- UKRI - <https://www.ukri.org/> - this is the organisation overseeing all research and innovation in the UK
- Specific research councils - <https://www.ukri.org/councils/> - includes the bodies funding academic research
- EPSRC - <https://www.ukri.org/councils/epsrc/> - funds engineering and physical sciences research
- InnovateUK - <https://www.ukri.org/councils/innovate-uk/> - focused on funding business innovation
- KTP - <https://www.ktp-uk.org/> - knowledge transfer partnerships between academia and industry